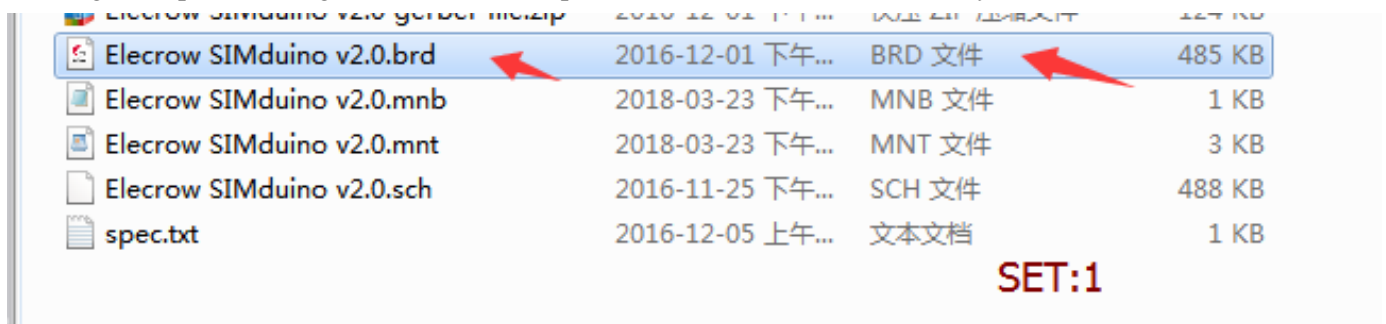


## Step by step guides to generate a coordinate file

Coordinate file is necessary for machine assembly. It describes the position and orientation of all the surface mount parts and includes the reference designator, X and Y position, rotation and side of Board(Top or Bottom). Make sure to check this step-by-step guide to know how to generate a coordinate file.

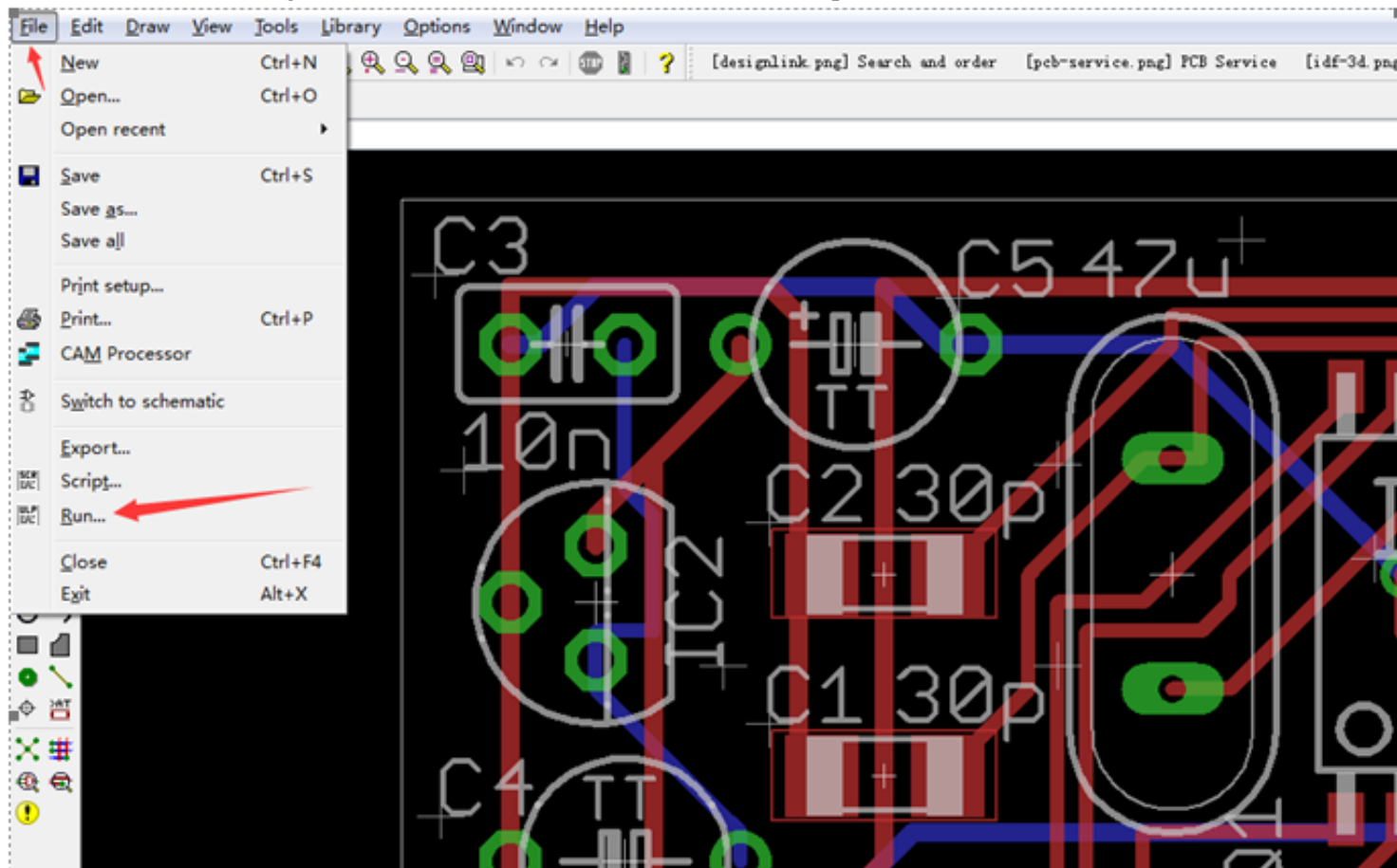
### Step 1

Use Eagle to open the design file that would export CAD(smt) coordinate, normally it's a file ended with \*.brd



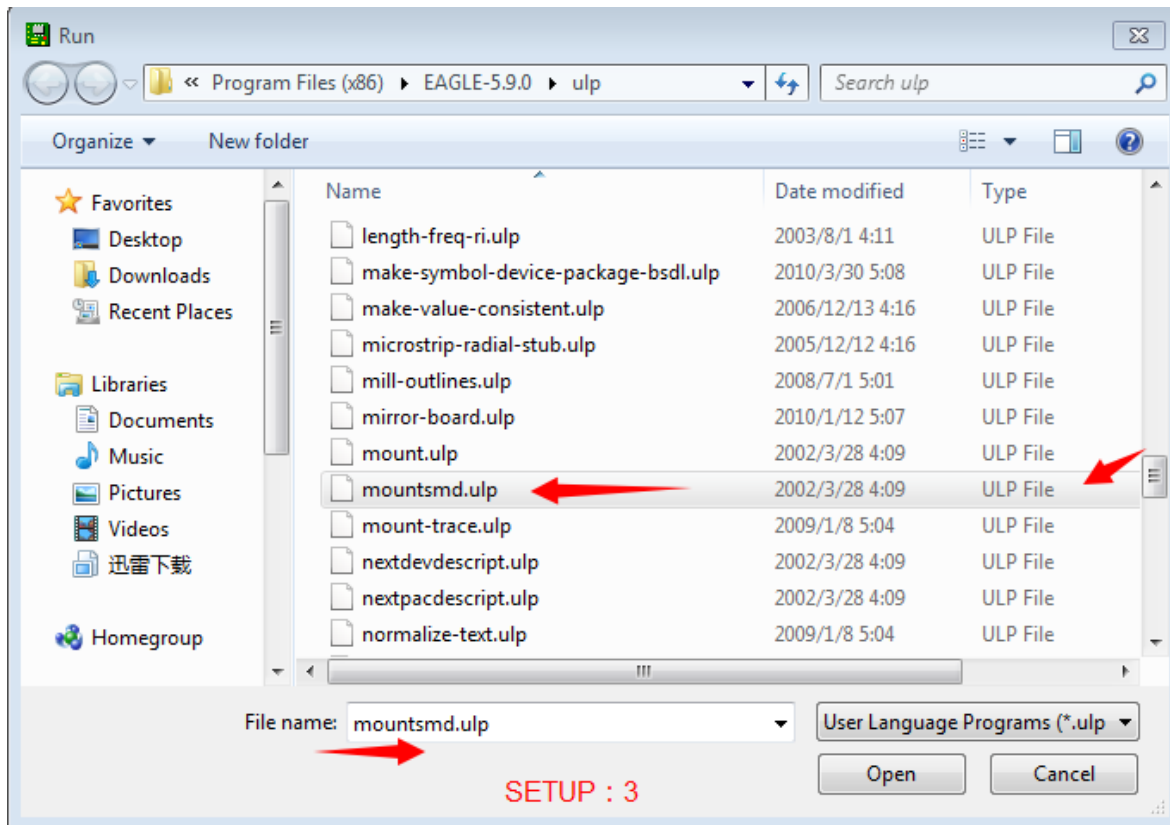
### Step 2

Enter into the "file editing interface", click "File" and check "Run" in the pull-down menu.



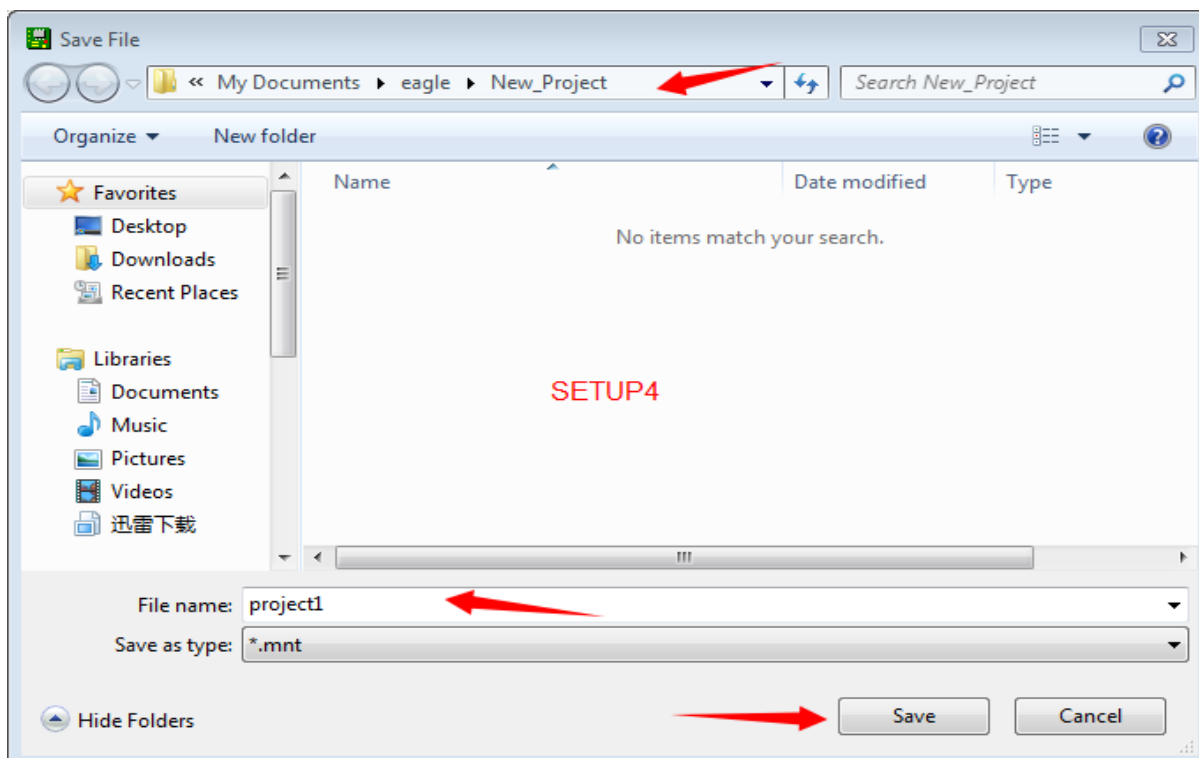
Step 3

There would be an optional dialog box popping when clicking the“Run...”. Find the file named “mountsmd.ulp” and click the button “open”.



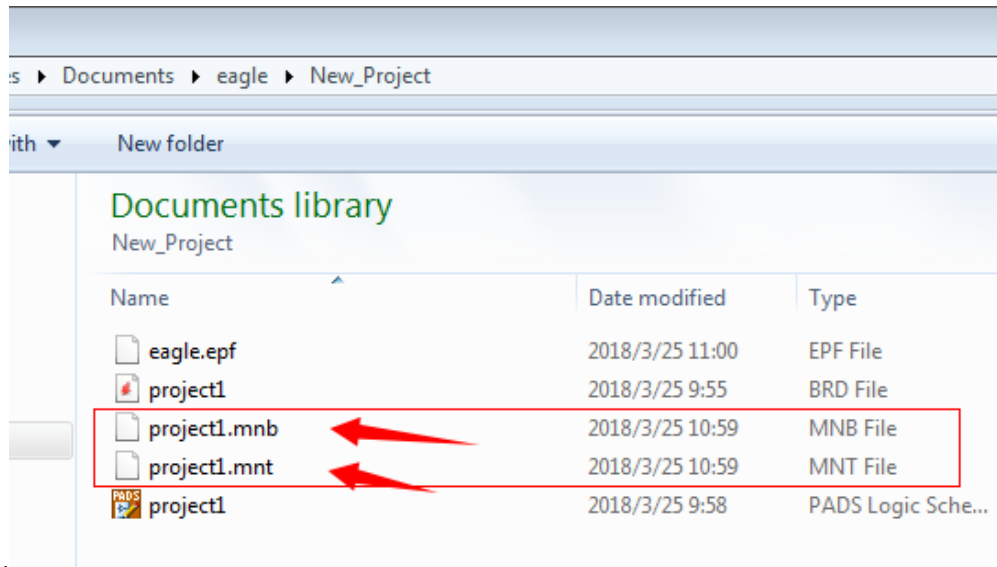
Step 4

With that there would be popping out a dialog box for which you don't need to make any extra change, just click “Save” and it would export the coordinates of TOP side and BOTTOM side as files in original path, and the files would be saved in the same directory as the currently opened board file. File ended with mnt is the coordinate of TOP side, file ended with mnb is the coordinate of BOTTOM side.



### Step 5

Return to the opened board file directory and find the two exported files in which the coordinate files are included, you could use WORDPAD or EXCEL or the likes to open it.



Please reach us at [service@elecrow.com](mailto:service@elecrow.com) for quotation and further information.